



AJUNTAMENT DE
SANTA EULÀRIA DES RIU
visitsantaeulalia.com



SANTA EULÀRIA
Natural diversity · Ibiza

visitsantaeulalia.com

Santa Eulària des Riu:
the Ibiza families love



SANTA EULÀRIA

Natural diversity · Ibiza

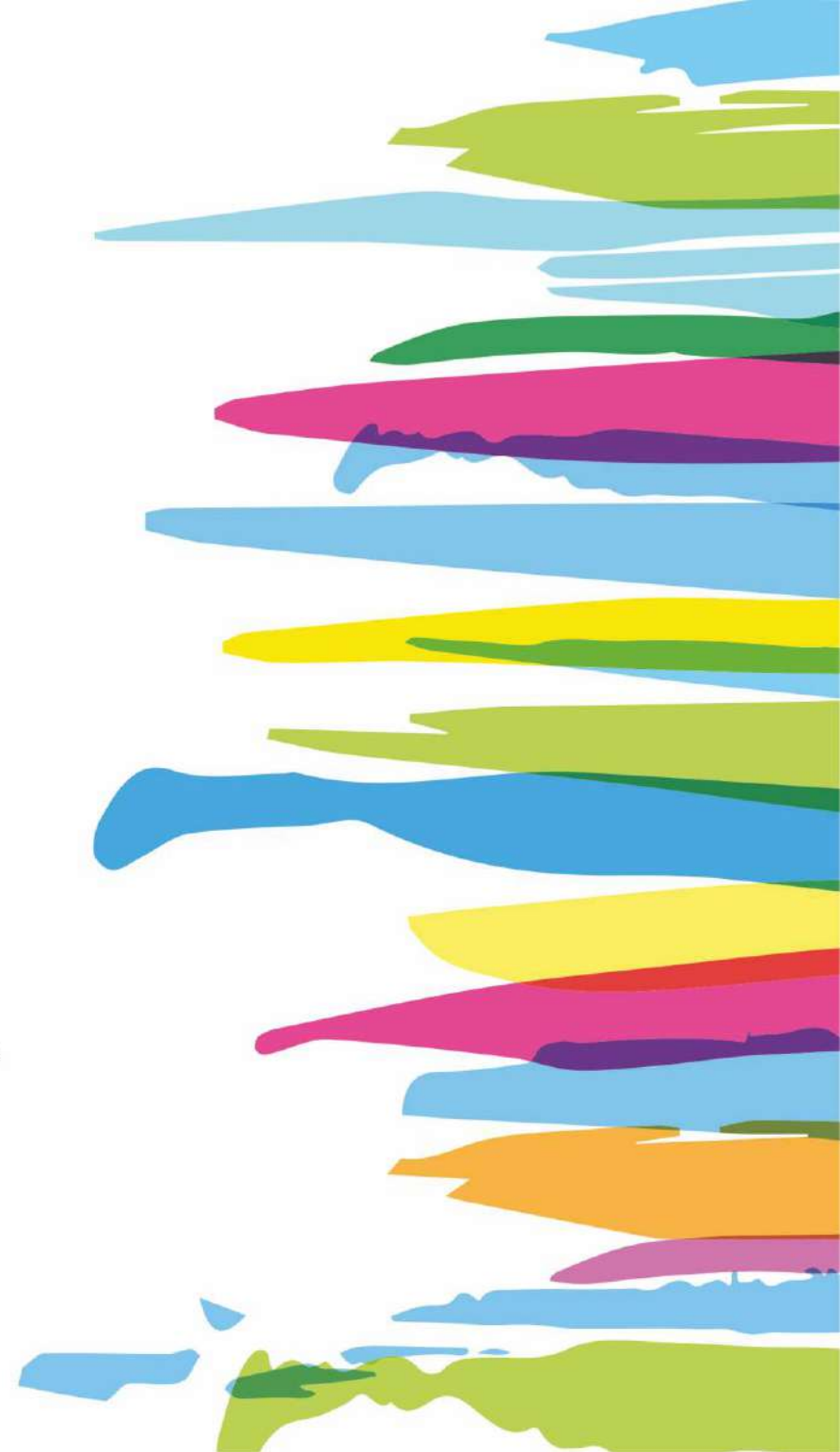
A place where everyone lives in harmony

Because of its hippy past and the freedom that every corner of it inspires.

Because of being the meeting point of artists, intellectuals, celebrities and people from all walks of life who seek it for its discretion and welcoming nature.

Because of its lifestyle - open, cosmopolitan and inclusive - where anyone, whatever their constitution, can find their place.

Because this is Santa Eulària, a destination with a great variety of people who live naturally in harmony.



APP Beach & Sun
Playas/Beaches Santa Eulària Ibiza

The app that provides you with practical information in real time about Santa Eulària's beaches

Childhood summers stay with us forever. They remain etched in memory, eternal, happy, always full of discovery, laughter, new friends...pure magic. Come to Santa Eulària des Riu and find the ideal setting in which to enjoy an unforgettable holiday with your children. Located on the eastern shore of Ibiza, our municipality offers over twenty beaches with warm, transparent waters that are calm and safe. We also have quiet family resorts, specialized hotel establishments, simple walking routes and cycling holidays appropriate for the whole family. There are events and activities for kids, hippy markets and even the first non-smoking beach in the Balearic Islands. Come to Santa Eulària des Riu. We'll help you create your children's best memories.





Beaches
highly recommended for
families with young children



More than 20 beaches for every type of beachgoer. Over 46 km of coastline, quiet beaches without the crowds but offering a full range of services. Here are a few of our top family beaches:

Es Figueral, Cala Mestella, Cala Llenya, Es Canar, Cala Pada, Es Niu Blau, Platja de Santa Eulària, Platja des Riu de Santa Eulària, Cala Llonga.

Did you know that Santa Eulària beach is the first non-smoking beach in the Balearic Islands?

It's a bid for the conservation of our environment, to ensure that we can all continue to enjoy nature in the future. Help us keep our island clean.



Now you can play on the sand without encountering any of those objectionable cigarette ends.



ES FIGUERAL

This beach is one of the finest on the whole island. Its name means 'land of fig-trees' because in the area there are fields full of these fruit trees. The beach is formed by two adjoining beaches which are separated by a small spit of land which is connected to the coast by a strip of sand. The beach is ideal for families and offers a range of nautical activities. The beach has been awarded the **ISO 14001 Environmental Management Certificate**.

LOCATION: Located 10 kilometres from Santa Eulària.

ACCESS: From Sant Carles along the road towards the northern part of the centre of town following the road signs.



DIMENSIONS: Measuring some 400 metres in length, it varies between 40 and 50 metres wide.

TYPE: It has fine, dark and natural coloured sands alternating with rocky zones. The seabed alternates between sandy and rocky areas.

SERVICES: Located in an area combining residential properties and tourist accommodation, the beach has a wide range of services including disabled parking, disabled access, restaurants, shopping, boardwalks, showers, foot showers, lifeguard services, paddle surf, canoes, pedaloes, sunbeds and umbrellas.



CALA MESTELLA

This small beach is composed of two branches located on a narrow and sheltered inlet with great landscapes and marine environment. There are a number of beautiful spots on the rocky seabed to be discovered by snorkelling. The gentle slope of the seabed makes it very safe for bathing.

LOCATION: Located 10 kilometres from Santa Eulària.

ACCESS: From Sant Carles to the area of Es Pou des Lleó and then following the signposted route.

DIMENSIONS: Measuring 60 metres in length and 15 metres wide.

TPOLOGY: Fine natural sand alternating with rocky areas. The seabed combines areas of sand, rocky areas and underwater vegetation.

SERVICES: Restaurant, sunbeds and umbrellas.



CALA LLENYA

This is a sandy beach surrounded by pine trees which is at the end of a dried-up river. Its setting is peaceful with a range of leisure and sporting activities available. Due to its characteristics it is an ideal spot for sailing, snorkelling and a jumping-off point for numerous excursions through the surrounding countryside. The gentle slope of the seabed means that it is a very safe site for bathing.

LOCATION: Located 10 kilometres from Santa Eulària.

ACCESS: From Sant Carles, following the main road and the signposts.

DIMENSIONS: Measures 200 metres in length and 110 wide.

TYPE: Fine white, natural sand with a sandy seabed. At each end there are interesting rock formations ideal for snorkelling.

SERVICES: Disabled parking, disabled access, bar, restaurant, showers, umbrellas, sunbeds, lifeguard, canoes, pedaloes and small boat hire.



ES CANAR

The Es Canar beach is part of a family-oriented residential and tourism zone with beautiful views and with a wide range of water sports. The gentle slope of the seabed makes this a safe site for bathers together with its **environmental management ISO 14001 certificate**.

LOCATION: Located 5 kilometres from Santa Eulària.

ACCESS: The beach can be reached by following the road which links Santa Eulària and Es Canar. There is also a bus and ferry service departing from Santa Eulària.

DIMENSIONS: Measures 350 metres in length and varies between 30 and 40 metres wide.



TYPE: Both the beach and its seabed have fine and light coloured sand and the waters are crystalline.

SERVICES: Located with a wide range of services, there is a variety of restaurants, bars, souvenir shops, parking for persons with mobility issues and disabled access, water sports, lifeguards, water-skiing, ski-bus, para-gliding, pedaloes, canoes, showers, foot showers, sunbeds and umbrellas.

In the summer season, vessels leave the quay for Santa Eulària, Cala Llonga, Ibiza and Formentera. **There is also an assisted bathing service with an amphibious wheel-chair for the use of persons with mobility issues.**



CALA PADA

This is a family oriented beach which is flanked by two low lying areas of vegetation and pine groves. The gentle slope of the seabed makes this a very safe spot for sunbathers. When the wind blows the beach is also ideal for surfing.

LOCATION: Located at 3,2 km from Santa Eulària.

ACCESS: Access to the beach is by the main road which leaves Santa Eulària towards Es Canar and following the signposted turn-off.

DIMENSIONS: The beach is 200 metres in length and varies between 10 and 20 metres wide.

TYPE: The sand is of natural white, with medium-sized grains while the seabed is of fine sand.

SERVICES: Restaurants, sunbeds, pedaloes, ski-bus, water-skiing, small boats, sailing and windsurfing school, diving school, showers and umbrellas.



ES NIU BLAU

This beach is flanked by two outcrops which are covered with vegetation going right down to the sea and is at the mouth of a major river – the Torrent d'Arabí. The beach has a pleasant family atmosphere and has conditions which are perfect for relaxing as well as for waterborne sporting activities. The gentle slope of the seabed make it very safe for bathers.

LOCATION: Located 2 kilometres from Santa Eulària.

ACCESS: Located between Santa Eulària and Cala Pada, the beach can be reached by the main road which leaves Santa Eulària towards Es Canar and following the signs.

DIMENSIONS: Measures 100 metres in length and is an average of 12 metres wide.

TYPE: The beach has fine, natural sand alternating with areas of pebbles which are carried downstream by the river itself. The seabed is an alternation of sand, boulders and rocks.

SERVICES: Parking for persons with mobility issues and adapted access, restaurants, waterborne activities, showers, sunbeds and umbrellas.



PLATJA DE SANTA EULÀRIA

This is a sandy beach which is part of the town of the same name and ideal for family oriented activity. The slight incline of the seabed and the wind conditions mean that this is a very safe spot for bathers as well as for learning to sail. The beach has been awarded the **Environmental Management ISO 14001** and the **Universal Accessibility ISO 170001 certification**.

ACCESS: The beach can be accessed on foot along the streets of the town centre which lead down to the Santa Eulària seafront. There are 3 parking zones reserved for persons with mobility issues which are connected to a series of adapted facilities which are signposted and lead to a ramp for access to the beach.

DIMENSIONS: Measuring 300 metres in length and 40 metres wide.

TYPE: With fine, light-coloured sands drawn from the underwater banks and with a sandy seabed.



SMOKE-FREE BEACH

Santa Eulària des Riu cares about the health and wellbeing of its visitors and residents and is showing this through its initiative for the creation of a "smoke-free" beach in the municipality. The pilot project, the first of its kind in the Balearic Islands, is set to take place on the family-friendly and popular city beach of Santa Eulària des Riu.

ACCESS POINT: Reserved for persons with mobility issues where the lifeguard service provides support for persons requiring **assisted bathing** in the sea making use of the amphibious **wheelchair and crutches**.

SERVICES: The beach is located in an area for residents and tourism with a wide range of services including parking for persons with mobility issues and adapted accesses, showers and foot showers, lifeguard, boardwalks, sailing school and boat hire, ski-bus, canoes, paddle surf, pedaloes, sunbeds and umbrellas. During the summer season a ferry leaves the marina linked to the beach for Es Canar, Cala Llonga, Ibiza and Formentera.



PLATJA DE SANTA EULÀRIA



PLATJA DES RIU DE SANTA EULÀRIA

This beach is located just 10 minutes on foot from the centre of Santa Eulària between the mouth of the only river on the Balearic Islands and the Santa Eulària beach. The beach conditions mean that it is perfect for both family bathing and waterborne sporting activities. The beach has been awarded **Environmental Management ISO 14001 certification**. The slight incline of the seabed makes it very safe for bathing.

ACCESS: Access to the beach is along the streets which lead to the seafront at Santa Eulària.

DIMENSIONS: The beach measures some 300 metres in length and is 30 metres wide.

TYPE: The beach has two strips of fine white sand and pebbles which have been carried downstream by the river. The seabed is also a combination of sand and pebbles with rocky areas and underwater vegetation.

SERVICES: The beach is located in a residential and tourist area with a wide range of services including parking for persons with mobility issues and adapted access, bars, restaurants, shopping, showers and foot showers, lifeguard, boardwalks, water skiing, ski-bus, jet-skis, pedaloes, sunbeds and umbrellas. During the summer season vessels leave the marina which is linked to Santa Eulària beach for Es Canar, Cala Llonga, Ibiza and Formentera.



CALA LLONGA

The Cala Llonga beach forms part of a family oriented residential and tourist area with great views where you have opportunity to take part in a wide range of waterborne activities. The beach is located in a small bay which is open to the east with a range of high mountains covered by forests full of pine trees. The slight incline of the seabed mean that this is a safe spot for bathing. The beach holds **Environmental Management ISO 14001 certification and the Universal Accessibility ISO 170001 certification.**

LOCATION: Located 6 km from Santa Eulària.

ACCESS: By road either from Santa Eulària following the signs located between Km 11 and 12 on the Eivissa to Santa Eulària road or from Eivissa after going first through Jesús. There is parking reserved for persons with mobility issues.



DIMENSIONS: Measuring 200 metres in length and is 100 metres wide.

TYPE: Of fine, white, natural sand both on the beach as well as the seabed.

SERVICES: The beach is located in a residential and tourist zone with a wide range of services including parking for persons with mobility issues and wc adapted access, hotels, restaurants, bars, shopping, boardwalks, lifeguard, showers and foot showers, pedaloes, scuba diving and snorkelling, sunbeds and umbrellas. Beside the beach there is a children's play area and during the summer season vessels leave the quay on the beach for Santa Eulària, Es Canar, Ibiza and Formentera. **The beach provides an assisted bathing service to persons with mobility issues with an amphibious wheelchair.**



This is a wide and sandy beach of great beauty where it is possible to enjoy a peaceful and tranquil environment while taking in the contrasting shades of blue, turquoise and green of the clear and transparent waters. To reach this beach you need to walk down a slope for some 200 metres which makes it inaccessible for anyone with mobility issues. In the summer season, from 17 hours the beach becomes shaded due to the height of the cliffs which are its protection. The slight incline of the seabed makes this a safe spot for bathing as well as for snorkelling. Part of this beach is also open for nudists.

S'AIGUA BLANCA



This is a small beach which is not widely used but forms a part of a sheltered and rocky inlet on the coast which is home to fishermen's huts. The beach has fine sea views with a range of coves between the rocks and small islets that rise out of the sea in an almost virgin seascape. This is an ideal place for snorkelling and for relaxing. Only a few minutes away by foot is the watchtower known as Torre d'en Valls or Torre de Campanitx, which was built during the second half of the 18th century (around 1763). The beach has amazing views of the island of Tagomago.

ES POU DES LLEÓ



The characteristics of this bay make it an ideal spot for anyone seeking peace and tranquillity surrounded by beautiful landscapes and with an interesting local cuisine. The beach can be reached by a 100 metre stairway that makes it inaccessible for anyone with mobility issues. The gentle incline of the seabed makes the beach very safe for bathing.

CALA BOIX



The beach is flanked on each side by steep and rocky outcrops which enclose it and give it its uniquely charming landscape. On the left there is a small pine forest which leads to the discovery of some fine countryside. This is a great beach whatever the weather when it's calm its shallow bay offers a beautiful experience; while when it is windy fun can be had in the surf.

CALA NOVA



This is a sandy and family oriented beach which is a safe place for bathing as well as taking part in a variety of waterborne activities. When the wind blows this is one of the most popular spots for kite-surfing. The gentle slope of the seabed means that it is very safe for bathers. At the nearby Punta Arabí there is a popular hippy market on Wednesday.

CALA MARTINA



This little corner which is in the Siesta area is ideal for enjoying the beach in peace while sunbathing on the sands or snorkelling. The seafront which leads to this zone is perfect for taking a leisurely stroll along the sea's edge. There are great views of the steep cliffs at Cala Llonga which are home to an extensive pine grove. The gentle slope of the seabed means that it is a safe spot for bathing.

ES CALÓ DE S'ALGA



This is a beautiful sandy beach which is a very safe spot for bathing as well as offering a wide range of opportunities for practising water sports. Just a few metres from the beach itself there is a Roman aqueduct dating back to the 1st or 2nd century A.D. which measures 425 metres and was used to bring drinking water from a nearby source on the site of a trading-post. Almost certainly, the facility produced salt fish and 'garum', a fish sauce that was highly prized by the upper echelons of Roman society. Remains of a maritime-rural settlement have also been uncovered nearby. Both the aqueduct and the Roman imperial villa have been declared Cultural Assets.

S'ARGAMASSA



This is a small beach which is mostly quiet and has forests in the background together with very transparent waters. At 8 kilometers from Santa Eulària, the beach is located in the area of the urbanization Roca Llisa, off the Jesús - Cala Llonga road and near the golf course. You will find a security guard at the entrance to the urbanization, but access to the beach is not limited.

S'OLIVERA



Just 5 minutes from Jesús there is a charming pebble beach surrounded by pine trees and vegetation which is ideal for anyone in search of peace and tranquillity and where you have the opportunity to take a gentle stroll. The beach has beautiful underwater zones waiting to be discovered while snorkelling. A wooden boardwalk goes right down to the edge of the sea while the gentle slope of the seabed makes this a safe spot for bathing.

S'ESTANYOL



BEACHES OF SANTA EULÀRIA

1. S'Aigua Blanca
2. Es Figueral
3. Pou des Lleó
4. Cala Boix
5. Cala Mestella
6. Cala Llenya
7. Cala Nova
8. Es Canar
9. Cala Martina
10. S'Argamassa
11. Cala Pada
12. Es Niu Blau
13. Platja de Santa Eulària
14. Platja del Riu de Santa Eulària
15. Es Caló de s'Alga
16. Cala Llonga
17. Cala Olivera
18. S'Estanyol





Family Outings

RIVER WALK

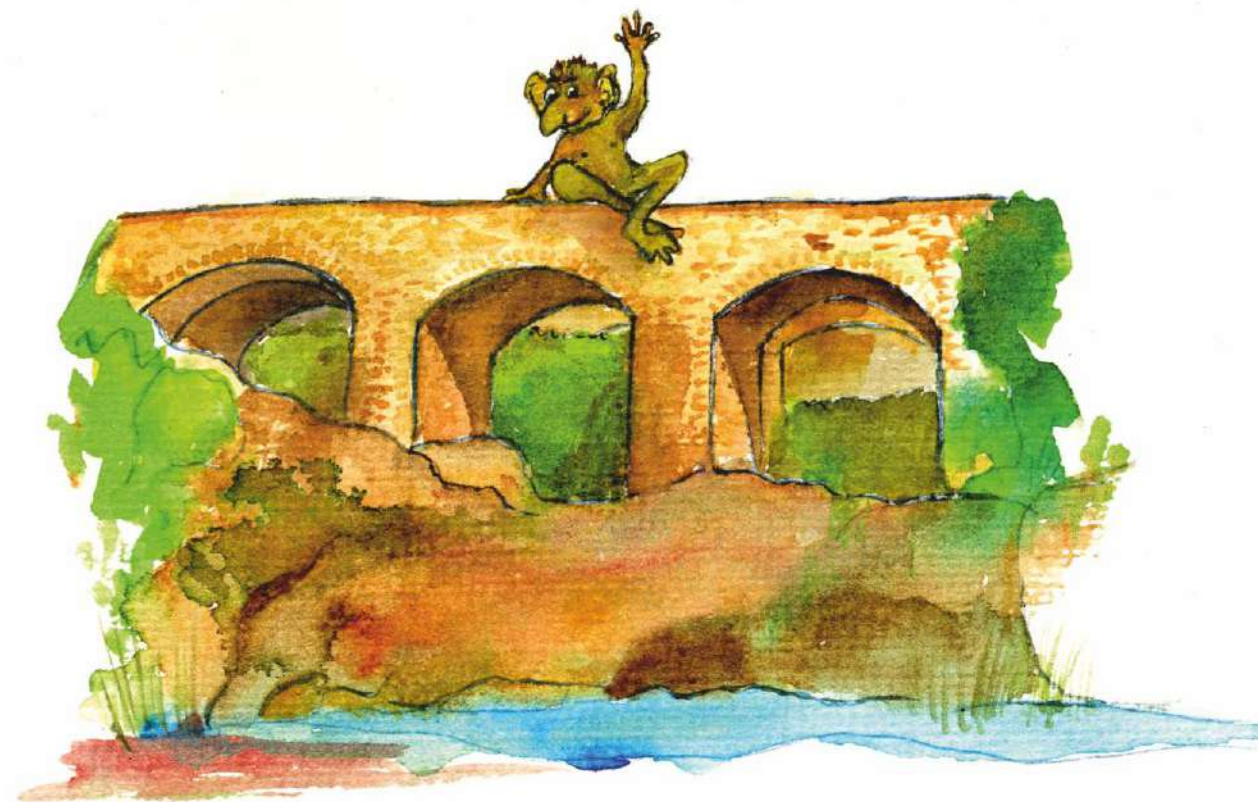
This three-kilometre route with informative signs sets forth the importance that the river and water have always had for this municipality. Along the way, walkers will also discover one of the island's most deeply rooted legends, that of a mythical being known as a "Fameliar".

You can see "Fameliars" in many places throughout Santa Eulària. How many can you spot?

I'm a fameliar

The most popular character of the superstitious imaginary of Santa Eulària des Riu is the fameliar, who has the shape of a small, bald, big-headed, small-limbed imp. His main characteristic is his extraordinary capacity for work, the ability to do the hardest farm work in no time. But, on the other hand, he could also be the ruin of the house because of his voracity, which leads to him devouring anything on the farm as soon as he stops working. Legend has it that, to avoid being left destitute, he would be entrusted with work impossible to complete. According to tradition, in order to obtain one of these imps one has to go, the night before Saint John's day, to the old bridge of Santa Eulària des Riu. There one has to find a flower that only grows that night, which has to be cut and put inside a black bottle. The flower, transformed into the imp, stays there until one needs his help.

If you want to know more about this unique character, in Santa Eulària des Riu you can take a stroll along the so-called River Route, where you find a fameliar serving as a peculiar guide on the information panels.





RIVER INTERPRETATION CENTRE: CAN PLANETES

Located at the foot of Puig de Missa in an old repurposed farmhouse, the interpretive centre showcases a restored medieval flourmill.

At Can Planetes you can also see the old tools and implements that were used in conjunction with flourmills. Further information can be gleaned from informative panels and a short film that illustrates the importance the river had in the development of agriculture in this area.

Are you strong enough to move the manual grinders that our forebears had to push to grind their grain?

Visiting hours: Tuesday to Saturday from 10 am to 1 pm.



ETHNOGRAPHIC MUSEUM OF IBIZA

Located on Puig de Missa inside Can Ros, a 300-year-old repurposed farmhouse, this museum offers visitors a broad vision of Ibizenco culture and the deeply rural nature of island life.

Its permanent exhibition showcases traditional clothing, jewelry, cooking utensils, farming implements, musical instruments and even firearms, while temporary exhibits focus on specific aspects of island ethnology.

Visiting hours:

April to September – open Tuesday to Saturday from 10am to 2pm and from 5.30 pm to 8 pm. Open Sunday from 11 am to 1.30 pm. Closed from Christmas till 31st January.

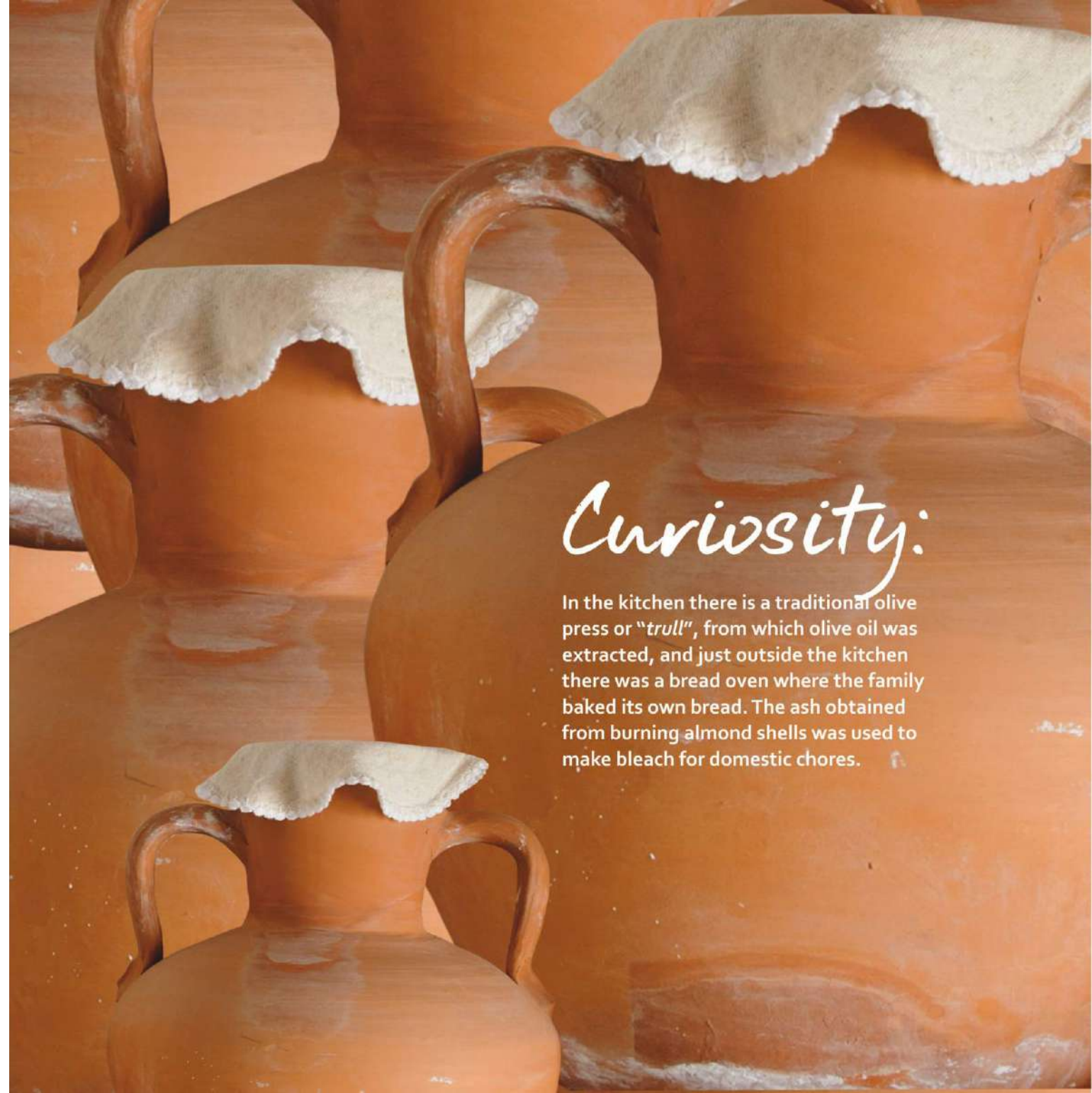
October to March – open Tuesday to Saturday from 10 am to 2 pm.



THE TRULL DE CA N'ANDREU OLIVE PRESS



This unusual museum is located in a repurposed 17th century farmhouse in Sant Carles. It contains the full range of tools and farming implements that were used in the agricultural tasks of quondam Ibiza. The house is kept as it would have been over 100 years ago, for which reason, walking through its doors is like travelling back in time.



Curiosity:

In the kitchen there is a traditional olive press or "trull", from which olive oil was extracted, and just outside the kitchen there was a bread oven where the family baked its own bread. The ash obtained from burning almond shells was used to make bleach for domestic chores.

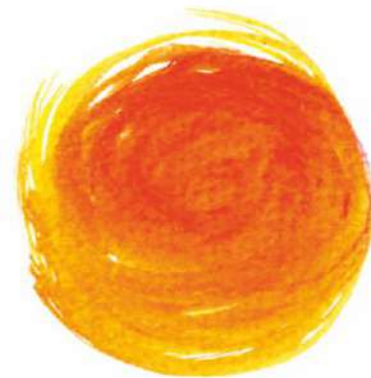


ES FAMELIAR KIDS PARK AND PLAYGROUND

This kid's park and playground, located in the area of Cas Capità, on the outskirts of Santa Eulària, covers an area of 5000 m². It has jungle gyms, slides, playing courts, etc. as well as picnic tables and a gardened walking area. There is also a swing set for children with functional diversity.

SANT CARLES PICNIC AREA

If you'd like to have a picnic, or even a barbeque, with your family in the middle of nature, you'll find a facility in Sant Carles that is equipped with grills, eating areas and public rest rooms. This wonderfully secluded spot is located in a pine glade that provides both sun and shade and is reached by turning down a side road off the main road linking Sant Carles and Es Canar.



Don't forget to take a picture with the big "F. Fameliar" who greets you at the park entrance.



Private Enterprises

Outings and Visits Available through Private Enterprises



Santa Eulària des Riu not only provides your children with beautiful clean beaches bathed by clear, warm, safe waters, we have much more for them in store. Our municipality offers a wide range of fun-filled activities for all ages. The littlest ones, for example, can visit an organic farm and learn what day-to-day life is like for a farmer. They can take a ride on one of the sightseeing trains that shuttle between the municipality's different touristic areas. Or they can find out how fun it is to navigate the sea thanks to the many boat trips that are available. Older kids have other options that step up the action-factor a notch or two. They can slide down a zip-line in an outdoor adventure park set in a pine forest. They can learn to snorkel and even drive a go-kart. Naturally, it goes without saying that there is a whole host of water sports and activities they can do once they get back to the beach.



SIGHTSEEING TRAINS

Several different companies provide the services of a sightseeing train that allows visitors to tour the municipality in a fun, carefree way. You may choose among various routes with departures from Cala Llonga, Santa Eulària (Passeig de S'Alamera), Es Canar and Es Figueras* (*on Wednesdays).

EXCURSION BOATS

Discovering the island's coastline from the vantage of the sea is always a good option. With departures from Cala Llonga, Santa Eulària, Cala Pada, Es Canar and Es Figueras, you will find numerous routes and excursions that allow you to enjoy the sparkling Mediterranean waters in true maritime fashion.



ADVENTURE ACTIVITIES

If you're looking for fun and adventure, here in our municipality you have at your disposal the island's first outdoor adventure park where you can run its gamut of circuits among the trees. If you prefer fun on wheels, don't miss out on our go-kart attraction, where kids from the age of three and up can whizz around the track.

WATER SPORTS. At all of Santa Eulària's beaches, you'll find a wide range of water sports and activities, from the tried-and-true options, like a nice ride on a pedal boat with the whole family, a kayak excursion or even a swoosh on the banana boat to the more exciting possibilities of parasailing or wakeboarding. Several dive centres, scattered throughout the municipality, offer lessons for beginners, or even whole courses, as well as organizing dives for all levels. The clarity of our waters, their biodiversity and their pleasant temperatures make diving and snorkeling an ideal way to discover the fascinating underwater dimension of Ibiza.





ORGANIC FARMS

In Santa Eulària there are several farms where you can observe indigenous breeds of livestock, learn about our traditional crops and try the typical products of our land. Whether you participate in a workshop or just go along for a visit, you are sure to enjoy this aspect of the authentic Ibiza.

LAND SPORTS

If you'd like to discover the heartland of our municipality, at an unhurried pace, so that the whole family can keep up, why not take a bike ride, or, if you prefer, a horse ride and have a lovely excursion along the different inland trails our municipality has set out and signposted?



MARKETS. The markets that have become so famous on our island started up right here in our municipality, in the vicinity of Es Canar. Here, next to the tourist resort Punta Arabí, the first Hippy Market was launched in 1973. Under the shade of hug pine trees, this open-air emporium brought together hippies and artisans who lived in the Sant Carles area. Now, several decades later, the market is still held every Wednesday from May to October. Its 500 plus stalls feature craftwork, fashion, jewelry, accessories, natural cosmetics, gastronomic products, musical instruments, leatherwork, decorative objects, etc. To top it all off, live music, areas for rest and relaxation as well as restaurants will enhance your shopping experience at this market, which has become one of the island's not-to-be-missed classic fixtures.

Another of the island's emblematic markets, Las Dalias, is also held in our municipality, a short distance from the village of Sant Carles.

What had once, in the 1950s, been a type of dance hall, by the 1970s, began to attract hippies who congregated once a week to give improvised jam sessions and sell their own paintings. However, it was not until the mid-80s that a weekly market began to coalesce around these events. With some 200 stalls featuring craftwork, fashion, jewelry and accessories, among other things, Las Dalias is held every Saturday year round, with a somewhat smaller retail surface during the winter months. During the peak summer season, however, additional evenings have been added to the Las Dalias roster, namely the Namasté event on Wednesdays and night-time markets on Mondays and Tuesdays. More options for summer shopping are available at the daily markets held in Cala Llonga and Santa Eulària (on the main boulevard Passeig de S'Alamera). But, if it's craft treasures you're after, head to the Cala Leña Craft Market, held every Sunday throughout the year.

FOR MORE INFORMATION ON ACTIVITIES AND COMPANIES, ENQUIRE AT ONE OF OUR MUNICIPAL TOURIST OFFICES. TEL. 971 330728





Routes

Cycling Routes and Hiking Trails



Two of the best ways to discover some of the little coves and hidden corners of Santa Eulària are biking and hiking. The whole family can take part as you venture into the more rural areas of our municipality. Santa Eulària has a network of 12 cycling routes and 11 hiking trails, designed to accommodate different ages and ability levels. The following are some of our suggestions for family outings:

TOURIST CYCLING ROUTES

- 1 SANT CARLES
- 2 ES FIGUERAL
- 3 ES CANAR
- 4 CALA PADA
- 5 BEACHES
- 6 RIVER ROUTE
- 7 SANTA EULÀRIA
- 8 CALA LLONGA
- 9 SES FEIXES
- 10 JESÚS
- 11 PUIG D'EN VALLS
- 12 SANTA GERTRUDIS



Events

Cultural and Sporting Events for Families



SPORTS EVENTS

Don't stand there waiting at the finish line if you'd rather be running. In Santa Eulària des Riu you will find sporting competitions open to all and scheduled for the off season when temperatures are favorable for such exertions. There are many possibilities for the whole family.

FIND OUT MORE ABOUT THE ACTIVITIES AT

www.santaeulariadesriu.com
www.visitsantaetulalia.com

CULTURAL EVENTS

FEBRUARY

12th February: Santa Eulària des Riu Patron Saint Day. Indoor and outdoor theatre, music, games, traditional dancing, shows for kids, attractions.

APRIL

Sunday prior to 23rd April. Day of the Book. Book sale – all ages, various languages, storyteller, theatre, workshops, kid's scavenger hunt.

MAY

1st Sunday in May: May Festivities. Music, games, workshops, parade of carts, traditional dancing, shows for kids, attractions. Activities are organized over the course of several days, culminating on the first Sunday in May.
3rd Sunday in May: Patron Saint Festivities at Puig d'en Valls. Music, games, workshops, traditional dancing, shows for kids, attractions.
4th weekend in May: The Barruguet Family Theatre Festival

JUNE

5th June: World Environment Day. Different activities and workshops.

JULY

6th – 10th July: Es Canar Festivities. Music, games, entertainments, parade of carts, traditional dancing, shows for kids, paella contest, attractions.

AUGUST

14th and 15th August. Cala Llonga Festivities. Music, games, parade of carts, traditional dancing, shows for kids, attractions.

SEPTEMBER

8th September: Patron Saint Day of Jesús. Music, games, workshops, traditional dancing, shows for kids, attractions.

3rd Thursday in September: Tourist Day. Activities, traditional dancing, food tasting at the Santa Eulària Town Hall as well as in Cala Llonga and Es Canar.

NOVEMBER

4th November: Sant Carles Patron Saint Day. Music, games, workshops, traditional dancing, shows for kids, attractions.

16th November: Santa Gertrudis Patron Saint Day. Music, games, workshops, traditional dancing, shows for kids, attractions

DECEMBER AND JANUARY

22nd December to 6th January: Christmas Celebrations. Children's workshops, youth workshops, diverse shows (storyteller, theatre, circus, music), attractions. Marketing campaigns in the Santa Eulària town centre, discounts, raffles.



Hotels and Lodgings



Name of establishment	Full Address	Contact number	E-mail address	Website	Do they have family rooms?	Do they have connecting rooms?	Do they have a children's menu?	Do they have a mini-club?	Do they have a children's pool?	Do they have family-specific services?
AGROTOURISM CAN PARRAMATTA	Cami es Novells 63, 07840 Santa Eulària des Riu (coordinates on Google Maps: 39.0031105, 1.5207431)	(+34) 971336943	info@parramatta-ibiza.com	www.parramatta-ibiza.com	Yes	Yes	Breakfast	No	Yes	Babysitter, excursions, information, family beaches
HOTEL AGUAS DE IBIZA LIFESTYLE & SPA	C. Salvador Camacho s/n, 07840 Santa Eulària des Riu (coordinates on Google Maps: 38.9860073, 1.5429183)	(+34) 971319991	info@aguasdeibiza.com reservas@aguasdeibiza.com	www.aguasdeibiza.com	Yes	Yes	Yes	No	Yes	Babysitter, cots, temporary beds, children's welcome gift, children's breakfast corner, painting kit
HOTEL RIOMAR	C. del Riu, 48, 07840 Santa Eulària des Riu (coordinates on Google Maps: 38.979633, 1.530720)	(+34) 971330327 (+34) 971330062 (+34) 609648141	info@hotelriomar.com	www.hotelriomar.com	Yes	No	Yes	No	Yes	Daily entertainments for children and adults
HOTEL CARIBE	C. Pou d'es Lleó s/n, 07849 Es Canar (coordinates on Google Maps: 39.000613, 1.576221)	(+34) 971330252	reservas@hotelcaribeibiza.com	www.hotelcaribeibiza.com	Yes	Yes	Yes	Yes	Yes	Entertainments throughout the day and night
INVISAHOTEL CLUB CALA BLANCA	Platja Es Figuerol s/n, 07850 Sant Carles (coordinates on Google Maps: 39.052989, 1.594765)	(+34) 971335100	cblanca@invisahoteles.com	www.invisahoteles.com	Yes	Yes	Yes	Yes	Yes	Pirate Island, Adventure Zone, babysitting service – on request for an additional fee)
INVISAHOTEL CLUB CALA VERDE	Platja Es Figuerol s/n, 07850 Sant Carles (coordinates on Google Maps: 39.049940, 1.596277)	(+34) 971335111	cverde@invisahoteles.com	www.invisahoteles.com	Yes	Yes	Yes	Yes	Yes	Pirate Island, Adventure Zone, babysitting service – on request for an additional fee)
INVISAHOTEL ERESO	Platja Es Canar s/n, 07849 Es Canar (coordinates on Google Maps: 39.002419, 1.574929)	(+34) 971330099	ereso@invisahoteles.com	www.invisahoteles.com	Yes	No	No	Yes	Yes	Entertainments for children
AGROTOURISM XARC	Poi 12 - nº 50, 07840 Santa Eulària des Riu (coordinates on Google Maps: 39.01516581188242, 1.5095525979995728)	(+34) 971339178 (+34) 620640460	reservas@agroxarc.es	www.agroxarc.es	Yes	No	No	No	No	Spacious garden with swings, jumpers and other games for children
SIESTA MAR S.L.	C. Las Margaritas, 41, 07840 Santa Eulària des Riu (coordinates on Google Maps: 38.9757648, 1.5276374)	(+34) 971330863	info@siestamar.com	www.siestamar.com	Yes	Yes	No	No	Yes	Yes - independent one-and-two-bedroom apartments with kitchen
APARTAMENTOS BAHÍA SANTA EULALIA	Pasaje Vapor Mallorca, 2, 07840 Santa Eulària des Riu (coordinates on Google Maps: 38.984171, 1.535932)	(+34) 971319625	info@bahiaapartamentos.com	www.bahiaapartamentos.com	Yes	No	No	No	No	No
AGROTOURISM CAN GUILLEM	Cami de Cas Savi, Ctra. Santa Gertrudis km 0,1, 07814 Santa Gertrudis (coordinates on Google Maps: 38.956337, 1.444816)	(+34) 619886959 (+34) 971316784	info@canguillem.net	www.hotelruralenibiza.es	Yes	Yes	Yes	No	Yes	No

Name of establishment	Full Address	Contact number	E-mail address	Website	Do they have family rooms?	Do they have connecting rooms?	Do they have a children's menu?	Do they have a mini-club?	Do they have a children's pool?	Do they have family-specific services?
HOTEL ÁNFORA IBIZA	C. de Cardona, 9.Es Canar 07840 Santa Eulària des Riu (coordinates on Google Maps: 38.999317, 1.577596)	(+34) 971330176	info@anforaibiza.com	www.anforaibiza.com	Yes	Yes	Yes	Yes	Yes	Entertainments for children and adults
APARTAMENTOS CASA LUIS	C. Lyon s/n, Ctra.Es Canar km 1, 07840 Santa Eulària des Riu (coordinates on Google Maps: 38.991587, 1.544673)	(+34) 971330731	info@casaluis-ibiza.com	www.casaluis-ibiza.com	Yes	No	Yes	Yes	Yes	Entertainments for children and adults
FUN VISTAMAR	Av. Punta Arabí, 146, 07849 Es Canar (coordinates on Google Maps: 38.9994925, 1.57883040)	(+34) 971332417	vistamar@funandroomshotels.com	http://vistamar.funandroomshotels.com/	Yes	Yes	Yes	No	Yes	Paellas/Barbecue/Games room/Solarium
P.I.M.S. HOLIDAYS S.L. Pueblo Espárragos	Urb Pueblo Esparragos, C. Monte Calvario, 10, 07849 Cala Llonga (coordinates on Google Maps: 38.95477, 1.513795)	(+34) 971196413	berylpims@gmail.com	www.pimsholidays.com	Yes	Yes	Yes	No	Yes	Cots, bars for stairways, high chairs. We try to make family stays as comfortable as possible, assisting with excursions, babysitters, restaurant reservations, medical attention if necessary, etc.
ME IBIZA	Urbanización S'Argamassa, 153, 07840 Santa Eulària des Riu (coordinates on Google Maps: 38.592986, 1.341241)	(+34) 902144440 (+34) 971330051	meibiza@melia.com	http://www.melia.com/en/hotels/spain/ibiza/me-ibiza/index.html	Yes	Yes	Yes	Yes	Yes	crafts, group activities and games
APART-HOTEL TROPIC GARDEN	C. Pare Vicent Costa, 10, 07840 Santa Eulària des Riu (coordinates on Google Maps: 38.9879586, 1.5447245)	(+34) 971044450	tropic@gardenhotels.com	www.gardenhotels.com	Yes	No	Yes	Yes	Yes	Entertainments for children and splash pool
AZULINE HOTEL CALA MARTINA	Av. Punta Arabí s/n, 07849 Es Canar (coordinates on Google Maps: 38.99378490140852,	(+34) 971330650	calamartina@azulinehotels.com	www.azulinehotels.com	Yes	No	Yes	Yes	Yes	Mini-club, activities, entertainments, Splash Park, playground
AZULINE HOTEL ATLANTIC	C. S'Aljub s/n, 07849 Es Canar (coordinates on Google Maps: 39.00133041415324, 1.57528817653656)	(+34) 971330175	recepcion.atlantic@azulinehotels.com	www.azulinehotels.com	Yes	Yes	Yes	Yes	Yes	Mini-club, entertainments and activities, playground
AZULINE HOTEL CORAL BEACH	C. Kilimanjaro, 15, 07849 Cala Llonga (coordinates on Google Maps: 38,573144, 1,311014)	(+34) 971330177	recepcion.coral@azulinehotels.com	www.azulinehotels.com	Yes	No	Yes	Yes	Yes	Mini-club, entertainments and activities, playground
GLOBALES MONTEMAR	C. Las Margaritas, 41, 07840 Santa Eulària des Riu (coordinates on Google Maps: 38.9757648, 1.5276374)	(+34) 971196506	res.montemar@hotelesglobales.com	www.hotelesglobales.com	Yes	Yes	No	No	Yes	Entertainments programme for children and adults (mini-disco, learning activities, fun sports, mini-park, mini-club, sliding board...)
S'ARGAMASSA PALACE SUITE HOTEL	Av. S'Argamassa, 82, 07840 Santa Eulària des Riu (coordinates on Google Maps: 38.5938421, 1.33491)	(+34) 971330271	reservas@sargamassa-palace.com	www.sargamassa-palace.com	Yes	No	Yes	No	Yes	No

USEFUL ADVICE AND INFORMATION

Emergencies: 112

RECOMMENDATION WHILE ON THE BEACH

FOR YOUR HEALTH

Use sunscreen.
Avoid prolonged exposure to the sun during the hours of maximum radiation (12 pm – 6 pm).
Stay hydrated.

FOR THE ENVIRONMENT

Showers
Don't waste water.
Don't use soap when you shower at the beach.
Report any damage or water leakage. (Phone: +34 971319407 - litoraliplatges@santaeularia.com)

Cleanliness
Don't litter. Collect all your rubbish before leaving the beach.
Don't leave cigarette ends in the sand.
Separate and dispose of trash in the appropriate containers.

AS A COMMON COURTESY

Noise: Avoid making noise that might disturb others, like shouting or listening to loud music.
Sport and leisure: Avoid throwing balls in crowded areas. Stay within the marked-off areas when swimming or practicing water sports.
Pets: Walking and/or bathing dogs or other pets on the beach constitutes a public health risk and is not allowed.
Signs and warnings: Always obey official signs and indications displayed on the beach.
For your safety: Obey any instructions given by the lifeguard. Abide by the flag code.
Green: bathing allowed; **Yellow:** bathe with caution; **Red:** bathing prohibited.

SAY NO TO STREET VENDORS.
ALWAYS USE LEGAL FORMS OF PUBLIC TRANSPORTATION.
IBIZA IS AN ISLAND WITH LIMITED RESOURCES. PLEASE DON'T SQUANDER THEM.
USE THE UTMOST CAUTION TO AVOID FIRES.

